

# EASY ROOF INTEGRATION SYSTEM



# SOLAR

**A SECURE AND AFFORDABLE SOLUTION**

Fixing system for integrating PV panels  
on pitched roofs.



# EASY ROOF INTEGRATION

## ROOF-INTEGRATED SOLAR PANEL MOUNTING SYSTEM



### THE ERI CONCEPT

EASY ROOF INTEGRATION (ERI) is a revolutionary installation system for integrating photovoltaic panels on ventilated roofs.

Thanks to its ingenious patented fastening method, the different parts of the EASY ROOF INTEGRATION fit together precisely, without cuts or gaps, and adapt perfectly to different roofs: residential, commercial, public, agricultural and industrial buildings.

**Compatible with most solar panels on the market.**

- JINKO
- AUO - BenQ
- Canadian Solar
- JA Solar
- LG
- REC
- Solarwatt
- Sunpower ...

**THE MOST RELIABLE INTEGRATED PV SYSTEM ON THE MARKET**



A height adjustable frame for maximum flexibility.

## CHARACTERISTICS

### Concept

Modular assembly by interlocking frames and profiles for different MWp.

### Material

- Polypropylene copolymer with additives.
- 100% recyclable: no production waste and no end-of-life waste.

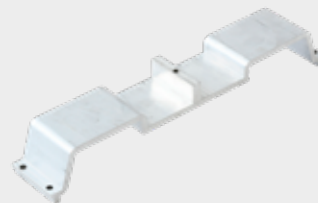
### Applications

Residential, commercial, public, agricultural and industrial buildings.

## PRODUCT ADVANTAGES

### Reliability

- Sealing ensured by the overlapping of parts.
- Jointless systems.



### Performance

- UV, hail, rust, heat, snow and wind resistant (valid for zone 4: snow, wind and sea according to NV-65 and Eurocode).
- Optimised ventilation thanks to air inlets and outlets under each module for improved energy efficiency.

### Compatibility\*

- Roofs with a pitch of 10° to 50°.
- Panels  
Length: from 1680 to 2000 mm. (from 66,14 inch to 78,74 inch)  
Width (frame):
- 1031-1050 mm (40,59 - 41,34 inch)
  - 1051-1070 mm (41,38 - 42,13 inch)
  - 1091-1100 mm (42,95 - 43,31 inch)
  - 1131-1150 mm (44,53 - 45,28 inch)

\*Compatibility is determined by criteria other than dimensions.  
Check the compatibility of your modules via [solar@tejasborja.com](mailto:solar@tejasborja.com)

### Tests, certificates and warranties

- Certification New Technical Survey (ETN - Enquête Technique Nouvelle) in progress.
- Technical Approval (ATE - Avis Technique) in progress.
- 10-year product warranty.

### Storage

- Common parts for the different frame sizes (excluding the frame).
- Standardised weight and dimensions.

### Installation

- Free standing vertical mounting.
- No cut-outs, bibs integrated in the frame, perfectly centred modules.
- Integration in any roof area.
- Optimised cable routing in rows and columns.
- Fast installation: Estimated 6 hours for a 3 kW installation (2 installers).

### Maintenance

- Fastening system with a single clamping screw.
- Each photovoltaic module can be replaced independently.

### Durability

- Patented concept that separates the fixing function of the photovoltaic panel from the waterproofing function, giving the product a durability that is unique.



## EASY ROOF

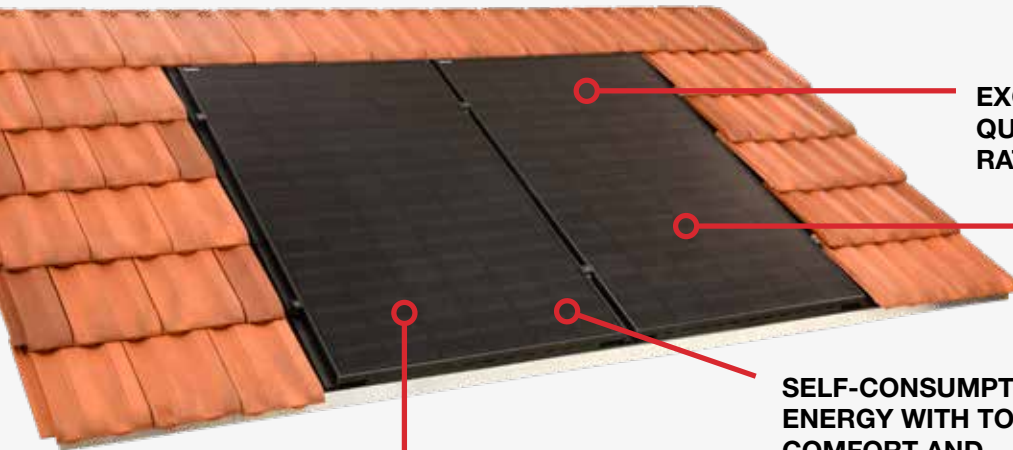
## INTEGRATION KIT

Fixing system for integrating solar panels on pitched tiled roofs + a complete kit for the installation of an integrated photovoltaic roof.

## TECHNICAL SPECIFICATIONS\*

Total length: 1952 mm (76,85 inch)  
Module length: 1762 mm (69,37 inch)  
Overall width: 1556 mm (61,26 inch)  
Average usable width: 1166 mm (45,91 inch)  
Unit power: 425 Wp

\*For JINKO Tiger Neo  
The values in the metric system prevail.  
Estimated imperial dimensions.



**EXCELLENT  
QUALITY/PRICE  
RATIO**



**10 year product  
and watertightness  
guarantee**

**PERFECT  
WATERTIGHTNESS**

**SELF-CONSUMPTION  
ENERGY WITH TOTAL  
COMFORT AND  
INTEGRATION**

**RECOGNISED SOLUTION  
FOR ITS RELIABILITY  
AND SIMPLICITY OF  
INSTALLATION**

## ELECTRIC PACK (OPTIONAL)

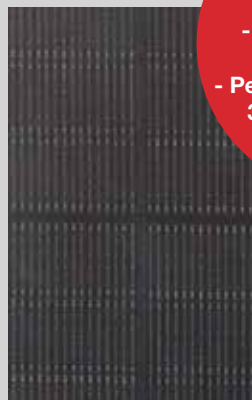
The complete KIT can be supplied for projects from 1500 Wp upwards. All our kits include a platform for production monitoring.

## KIT COMPONENTS



**Pre-frame for  
watertightness  
and fixings**

+



**Panel  
photovoltaic  
JINKO 425 Wp  
Full Black**

**JINKO Tiger Neo  
425 Wp  
- Product warranty:  
25 years.  
- Performance warranty:  
30 years at 87.4%.**



**Microinverter  
HOYMILES or  
equivalent\***



**Inverter SMA  
central inverter  
or equivalent\*.**



**AC / DC cables**



**Electrical  
protection**

\* The kit is determined according to the installed power.